



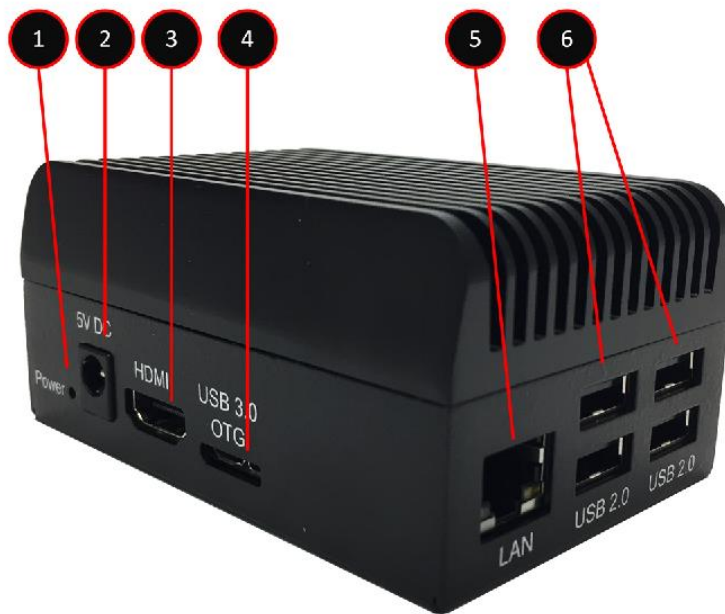
## ION-R100S Secure Display Station

Quick Start Guide  
Version 1.0  
*January 2025*

## HARDWARE INSTALLATION

The ION-R100S can be placed on a flat surface, such as a desktop, or mounted via the available VESA mounting bracket. During installation, ensure the unit is positioned to allow sufficient cable clearance and provide adequate airflow. It is recommended to connect the DC Power after all other connections as the ION-R100S will begin booting up as soon as power is supplied.

### Connectors description



1. Power button (recessed)
2. DC Power IN
3. HDMI 1.4a
4. USB 3.0
5. 10/100/1000 Base-T Ethernet
6. 4x USB 2.0

## MONITOR AND NETWORK CONNECTION

Connect monitor via the following port:

- HDMI 1.4a

Connect to video network switch:

- LAN



### Optional keyboard and mouse

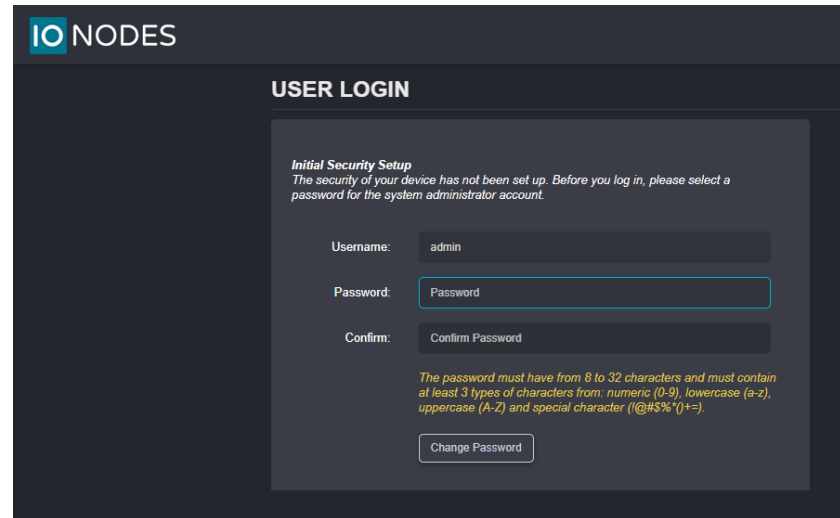
For initial configuration or for on-site maintenance, you may need to access the device's user interface locally by connection a keyboard and mouse to the unit's USB ports.



## POWERING FOR THE FIRST TIME

At first boot of the unit, the main user interface will appear on the connected display monitor.

- Click on “Switch to Configuration View” for initial device setup
- Follow the User Manual for setup steps
- Upon first login, you will be prompted to select the initial password for the built-in admin account

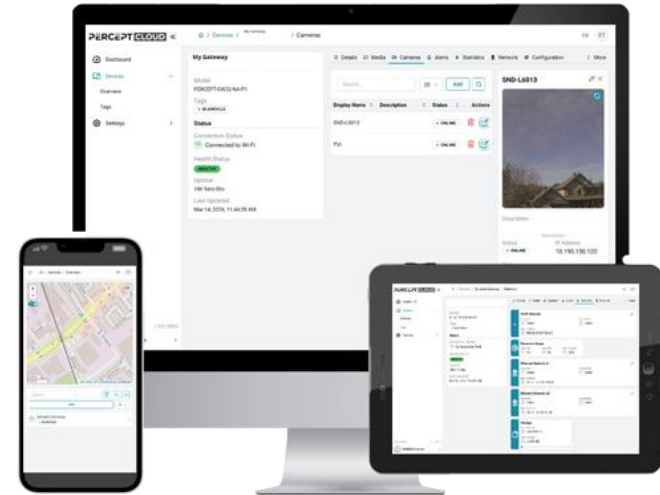


## Powering Off

You can disconnect power from the unit while it is still running, as the device is protected from data loss or corruption. You may press the recessed power button, but note that doing so will require pressing it again to power it back on.

# PERCEPT CLOUD

Redefining Systems Management  
with Insight, Efficiency and Control



Onboard your IONODES devices into PERCEPT Cloud to unlock their full potential! Centralizing the management of your fleet of Secure Display Stations empowers you with an enhanced user experience, providing the tools and features you need to oversee and operate your devices seamlessly from a single pane of glass.

With PERCEPT Cloud, you get:

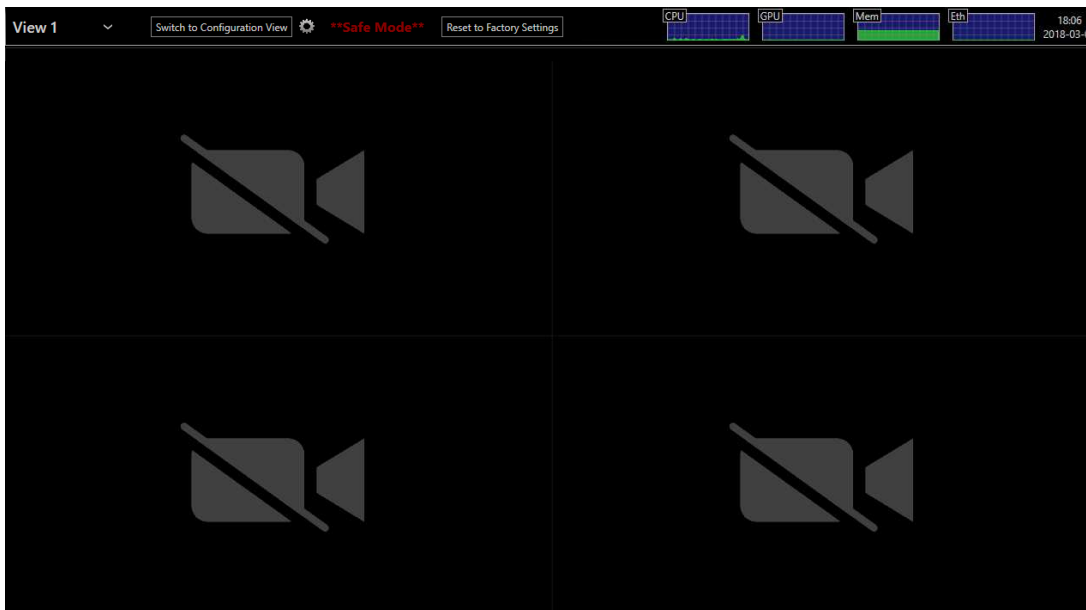
- Remote access & systems management
- Device health monitoring
- Centralized software updates
- Mapping and geolocation
- Live display preview
- Configuration templates
- and much more!

## Get Started Today!

Visit [perceptcloud.io](https://perceptcloud.io) to start your journey by creating your PERCEPT Cloud account and onboarding your devices in a few simple steps.

## SAFE MODE AND FACTORY RESET

In the event your system has become corrupted or unusable in any way, or you simply wish to reload your system to its factory default settings, the appliance offers a safe mode mechanism that prevents your unit from decoding video and return it to a temporary stable state.



1. Reboot the unit with a USB keyboard and mouse connected
2. During boot up, at the 'Starting system services...' splash screen, press and hold both the LEFT SHIFT and RIGHT SHIFT keys
3. The device will acknowledge Safe Mode operation when it detects the key combination
4. Go to the device's configuration and apply required changes
5. You may also initiate a reset to factory settings from the configuration view's maintenance section, or by pressing on the Reset to Factory Settings button present in the top banner when in Safe Mode
6. Once the new settings are applied, reboot the device, it will restart in normal mode

## THANK YOU

Thank you for purchasing an ION-R100S appliance. Should you require any assistance or support with this or any other IONODES product, please contact our support team using one of the methods below:

Via Email: [support@ionodes.com](mailto:support@ionodes.com)

Via 1-450-696-1060

Phone: 1-844-696-1060 (toll free)