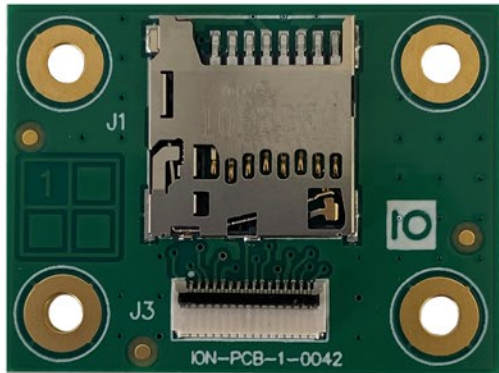


ATOMAS-IOT-DUAL-SDSIM

OEM IP Video

Micro-SD and Nano-SIM Breakout Board for ATOMAS-IOT Modules

The ATOMAS-IOT-DUAL-SDSIM breakout board is a micro-SD/nano-SIM add-on board designed for use with ATOMAS-IOT-DUAL encoders. This optional module brings edge recording and 3G/4G LTE networking support to your ATOMAS design.



Features

- Support for micro-SD memory card
- Support for nano-SIM card
- Connects to ATOMAS-IOT-DUAL
- Miniaturized form factor

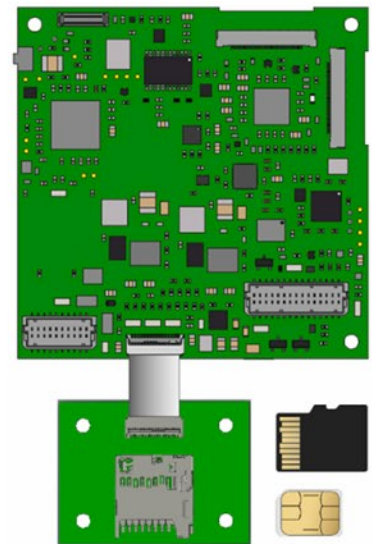
The ATOMAS-IOT-DUAL SDSIM breakout board is designed to interface with the ATOMAS-IOT-DUAL encoder module to provide compact removable options.

Enabling Edge Recording

Adding this breakout board enables inserting a micro-SD card for use with the ATOMAS-IOT-DUAL's edge recording functions.

Enabling LTE Connectivity

Adding this breakout board enables inserting a nano-SIM card for use with the ATOMAS-IOT-DUAL's 3G/4G LTE networking functions.



Target Applications

- Video surveillance cameras
- Industrial image processing
- Handheld, mobile or IoT devices
- UAV / military applications

DIMENSIONS

