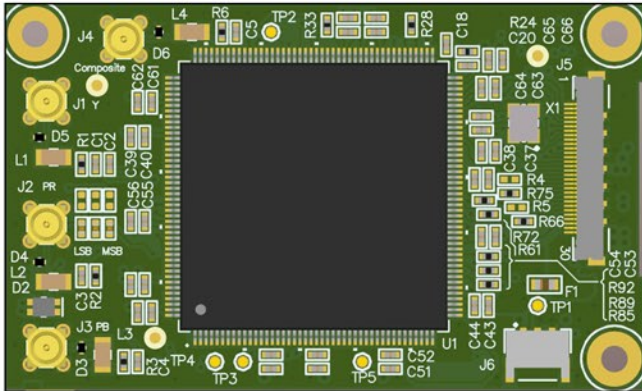


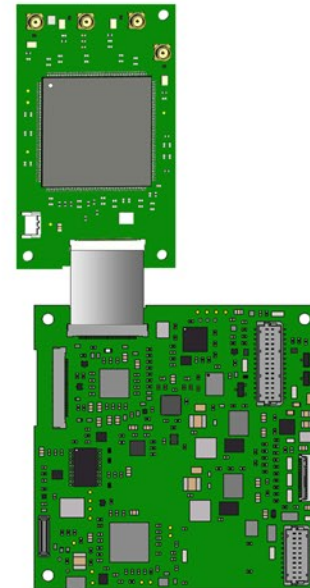
Analog Input Breakout Board for ATOMAS-IOT-DUAL

The ATOMAS-IOT-DUAL HD component breakout board is an add-on board designed for use with the ATOMAS-IOT-DUAL line of encoders. This optional module brings support for analog SD composite video (PAL/NTSC), as well as analog HD component (Y/Pb/Pr) to your ATOMAS design.



Features

- Support for analog SD composite
- Support for analog HD component
- Connects to ATOMAS-IOT-DUAL
- Miniaturized form factor



The input signal to be used by the ATOMAS-IOT-DUAL HD component breakout board is software configurable (analog SD composite or analog HD component). Only one input signal type can be used at a time.

Enabling Analog SD Composite (PAL/NTSC)

Adding this breakout board enables connecting to your ATOMAS-IOT-DUAL a camera that outputs an analog SD composite signal. The connection to the camera requires a coax cable with an MMCX connector.

Enabling Analog HD Component (Y/Pb/Pr)

Adding this breakout board enables connecting to your ATOMAS-IOT-Dual a camera that outputs an analog HD component signal. The connection to the camera requires three (3) coax cables with MMCX connectors.

Target Applications

- Video surveillance cameras
- Inspection robotics
- Handheld, mobile or IoT devices
- UAV / military applications

DIMENSIONS

