



CUSTOMER SUCCESS STORY

Brazil's Energy Operator Partners with Go Tech to Deploy
IONODES PERCEPT Body Cameras

WWW.IONODES.COM

IO NODES

A COLLABORATIVE APPROACH TO CRITICAL INFRASTRUCTURE PROTECTION

One of the largest oil and gas companies in Brazil has reinforced its security infrastructure through the deployment of IONODES PERCEPT Body Cameras. These IoT-connected, open-platform body cameras are now actively in use across 13 locations in the country.

This transformation was made possible by two mission-critical partners: Go Tech, a logistics and Industry 4.0 expert, and systems integrator known for its flawless execution. Together, they delivered a future-proof security solution that is changing lives on the ground.

With operations in remote and expansive regions, the organization needed a body-worn video solution that

could deliver crystal-clear video, lasting endurance, and rock-solid reliability even in areas with poor connectivity and limited infrastructure.



THE CHALLENGE



The cameras had to pass rigorous wireless certification while integrating seamlessly into the company's existing Genetec video management system. More than a product, they needed trusted allies, local experts capable of delivering a high-stakes project with zero compromise on performance, compliance, or speed.

Enter Go Tech, the driving force behind regulatory success and smooth distribution. With sharp precision and unparalleled expertise, Go Tech coordinated the efforts that ensured every PERCEPT Body Camera reached its destination certified and ready, working seamlessly with partners to move through Brazil's complex ANATEL certification. Their role was far more than logistical; they guaranteed that things went smoothly every step of the way.

THE SOLUTION



On site, the systems integrator served as the tactical lead for implementation. As a nationally recognized systems integrator in Brazil, the team executed a seamless rollout across key administrative and remote facilities. Their deployment know-how minimized downtime, accelerated adoption, and equipped security teams with a powerful new tool without disrupting ongoing operations.

The PERCEPT Body Cameras were selected for their ability to meet the company's high standards. They offer industry-leading 4K video resolution, LTE and Wi-Fi connectivity, and are certified for use in Brazil. Their robust design supports full 12-hour shifts, backed by fast-charging PERCEPT docking stations, keeping cameras ready for action.

POSITIVE CUSTOMER OUTCOME

The cameras also feature built-in dual microphones and a speaker for two-way communication over LTE or Wi-Fi, improving real-time interaction between guards, and control centers, ensuring that guards are never alone in the field. A top-facing OLED display provides immediate visual feedback on device status, including recording, connectivity, and alerts, empowering users with total confidence in their gear.

With 130 PERCEPT Body Cameras now in daily operation, the company has fortified its perimeter and internal security across multiple sites. Security teams rely on these cameras for gate control, interior patrols, and monitor key access points throughout the day. The result: real-time situational awareness, uncompromised visibility, and unmatched accountability, all thanks to a solution that delivers under pressure.

Looking ahead, the PERCEPT Cloud Solution offers additional flexibility for future deployments, providing secure, on-demand access to live video feeds captured by the PERCEPT Body Cameras from anywhere via a web app. It enables direct camera-to-cloud connectivity and includes features such as real-time location tracking, centralized camera software upgrades, and remote device management. This cloud platform gives organizations the ability to remotely manage devices across challenging environments, should they choose to adopt it.

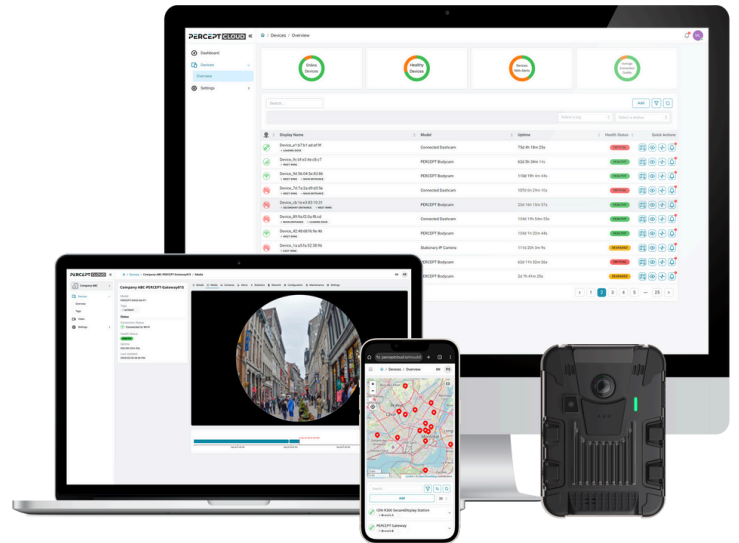


"In regions where connectivity varies and facilities are hours apart, reliability isn't optional. With ANATEL-approved LTE, straightforward integration with the existing VMS, and rapid dock charging, we rolled out 130 PERCEPT cameras with minimal disruption and immediate operational gains." —Gabriel Inocêncio, Go Tech

INNOVATION MEETS TRUSTED EXPERTISE

This deployment is more than a technology upgrade. It reflects a forward-thinking approach to operational security. By teaming up with industry leaders at Go Tech and the elite systems integrator, the company has implemented a solution that enhanced accountability, streamlined video monitoring, and reinforced its commitment to advanced security technologies.

This project demonstrates the strength of local partnerships and reliable technology, with Go Tech and the systems integrator playing essential roles in delivering a comprehensive, scalable solution aligned with long-term security strategy. This is what happens when innovation meets trusted expertise.



Industry-leading 4K video resolution



Real-time location tracking



4G LTE and Wi-Fi connectivity



IoT-connected open-platform solution



ABOUT gotech

Go Tech specializes in technology for electronic security projects, including IP cameras, access control, video analytics, perimeter protection, video walls, and more. Additionally, they provide environmental sensors and automation solutions. Go Tech aims to restore the trusted reputation of authorized service providers by partnering with complementary manufacturers, turning employees into knowledgeable consultants for clients.

WHAT CAN **ION** NODES DO FOR YOUR BUSINESS?

Visit our [product page](#) to learn more about the Secure Display Station product line or [request a personalized demo](#) today!



www.ionodes.com



Head Office (Canada)
1-450-696-1060
1-844-696-1060 (Toll Free)



sales@ionodes.com

EMEA Office (Luxembourg)
+352 661 23 03 33

